

MEDICAL SOCIETY



UNIVERSITY OF NEW
SOUTH WALES



2022

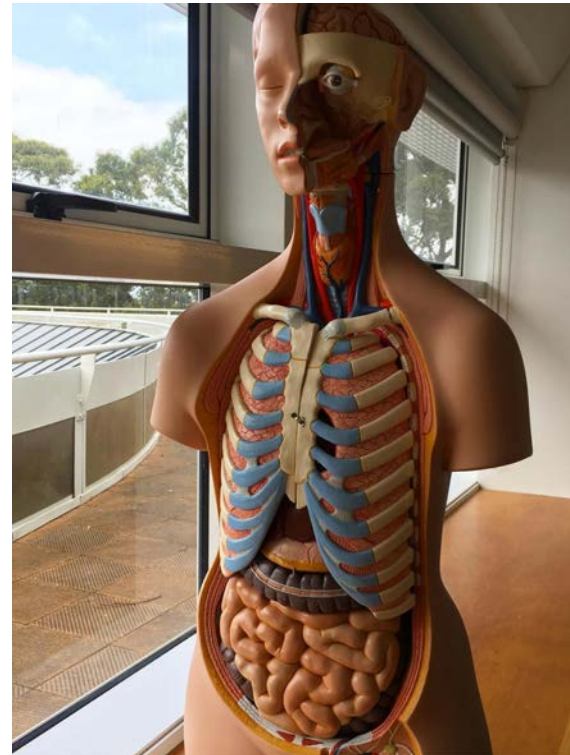


INTERNATIONAL STUDENTS' INFORMATION PACK

JOYCE TAN & KAITLIN LAI

CONTENTS PAGE

01	INTRODUCTION TO MEDSOC
02	INTRODUCTION TO MEDSOC PRESIDENT
03	INTRODUCTION TO VPE AND VPI
04	INTRODUCTION TO INTERNATIONAL REPS
05	INTRODUCTION TO FIRST YEAR REPS
06	FACEBOOK GROUPS TO JOIN
07-08	COUNTRY GROUPS TO JOIN
09-10	MUST-DOS
11	ULTIMATE PACKING LIST
12	OTHER IMPORTANT INFORMATION
13	ACCOMMODATION (ON-CAMPUS)
14	ACCOMMODATION (OFF-CAMPUS)
15	GETTING AROUND SYDNEY
16-18	GENERAL LIFE TIPS
19	INTERNSHIP
20-23	GET INVOLVED
24	ULTIMATE CHECKLIST



INTRODUCTION TO MEDSOC

Welcome to Sydney, to UNSW, and to a cohort of the most intelligent, genuine and committed people you'll ever meet!

We're super excited to have you joining us at the student-run Medical Society (MedSoc) at UNSW. We organise social and academic events for you as well as represent your welfare and academic needs to Faculty. We're always available if you want advice, a study buddy or a chat. From your very first year, we recommend that you take all the chances you can get. We know this year can be especially difficult due to settling into a new country, COVID restrictions and more. However, we are here for you and will be organising lots of fun events to make sure you have an amazing time. We'll always have your back and we will be there whenever you need it!

Enjoy your years here in Medicine. They've been the best of our lives and we're committed to making them the best of yours!

Your MedSoc Executive

Links to join your MedSoc
Facebook groups:

<https://bit.ly/international-group>

<https://bit.ly/class-of-2027>

<https://bit.ly/med-noticeboard>



YOUR MEDSOC EXECUTIVE 2022

President: Josh Lowinger (IV)

Vice President External: Angela Xue (IV)

Vice President Internal: Jason Djafar (IV)

Secretary: Sophie Mok (III)

Treasurer: Joshua Mok (IV)

Human Resources: Elisabeth Abhayartna (III)

Public Relations Director: Joyce Wu (IV)

Events Director: Daniel Rebello (III)

Sponsorship: Jack Nethery (III)

Academics Director: Anirudhan Kasavaraj (III)

AMSA Rep: Jonathan Greenberg (III)

INTRODUCTION TO MEDSOC PRESIDENT

Hi everyone! My name is Josh Lowinger and I am honoured to be the President of your Medical Society (UNSW MedSoc)!! :D I can't wait to meet all of you, get to know you and share this amazing Medicine journey with you over the coming years!

UNSW Medicine is such a diverse, welcoming, inclusive, vibrant community and I'm sure you'll feel right at home here! I can imagine you're probably feeling a bit nervous about the move to a whole new country (and that is completely normal!) but let me assure you that you will make sooooo many amazing friends here from not only your home country but from right around the world, and the Medicine community will become your brand new family <3

The entire MedSoc community (including me) are here for you to make your transition into Medicine as smooth as possible. So if there is anything we can do for you, if you have any questions about Medicine, about MedSoc, about uni, about life, or even just want to have a chat, reach out and message any one of us any time!

There will be many opportunities coming up to meet your Medicine family and get to know all your peers, so keep an eye out! Get keen in particular for O Day on February 8th and MedCamp from February 25th - 27th which your amazing First Year Reps, Jemma and Mason will be running. Also make sure you sign up for the International Mentoring Program, organised by your lovely International Officers, Kaitlin and Joyce.

Congratulations and welcome to this amazing community!

Love,
Josh ❤️😄

p.s. add me on Facebook!
www.facebook.com/joshlowinger



Josh Lowinger
Year IV Medicine
UNSW Medical Society President

INTRODUCTION TO INTERNATIONAL OFFICERS



Joyce Tan
(Year III)
Singapore



Kaitlin Lai
(Year III)
South Africa



Hello to all freshies!

HUGE congratulations on getting into UNSW Medicine! As your 2022 International Officers, we're so excited to have you join our diverse community of international students and look forward to meeting everyone :D

A little bit about us:

I'm Joyce and I'm from Singapore. Having been onshore for the past two years, I totally understand how difficult it is being away from home and loved ones. I hope we'll be able to make this transition easier for everyone, through our events and this info guide.

And I'm Kaitlin, from South Africa. I still remember flying to Sydney all by myself for the very first time just last year! I know the concept of moving overseas and studying in a new country can be very daunting, especially in light of all the changes to university life that COVID-19 has spurred. But rest assured that you'll find an amazing support network here at UNSW Medicine which will hopefully make your transition to uni life as comfortable as possible :))

We understand that moving to a new country can be extremely daunting. Just remember that you're not alone - we've all been in your shoes and, along with our team of committee members, we are here to make your journey easier. So make sure to join our international student Facebook groups and group chats, and drop us a message if you have any questions!

YOUR INTERNATIONAL OFFICERS

Joyce Tan (III) & Kaitlin Lai (III)
international@medsoc.org.au

INTRODUCTION TO FIRST YEAR REPS



YOUR FIRST YEAR REPS

Jemma Lowinger (II)
& Mason Ginters (II)
year1@medsoc.org.au

Hey guys! Welcome to UNSW Med! We're Mason and Jemma, your First Year Reps :) Our purpose as First Year Reps is to ensure all your needs, ideas or questions are advocated to faculty. Soon, we'll be handing over to your First Year Reps who YOU will vote in from your own grade!

Preparing to move to a new country for university is, undoubtedly, daunting and so we want to assure you that we're always here to help you in any type of way. Whether it be questions about study techniques, medsoc life or random 12am thoughts, our dms are always open. We're also both super talkative so if you see us around on campus make sure to come say hi, we'd love to get to know you all!

Finally, we want to say that you should be very very proud of yourselves and what you have achieved. Enjoy first year and take every opportunity that comes to you. Uni will truly be the time of your lives. We are very keen to meet you all soon :)

Love,

Jem and Mason

INTRODUCTION TO VPI

Hey guys! I'm Jason and I'm the Vice President Internal (VPI) for UNSW Medsoc 2021. Welcome and big congratulations for getting into Medicine!! I hope you meet some forever friends and build lifelong memories over the next six years. Starting Med, I couldn't imagine where this next chapter in life would take me but I've been there through the nerves, trials, tribulations, achievements, fears and smiles! Please never feel afraid to reach out, say hi to me or anyone you see in the course. I was amazed at how supportive and caring everyone was if you needed it and I hope you have as warm an experience as I did. Good luck!! You're in very safe and incredible hands with Kaitlin and Joyce as your International Student Reps this year :)

All the best,
Jason xx



INTRODUCTION TO VPE



Hello everyone, I'm Angela and I'll be your Vice President External for 2022!! A big warm welcome to UNSW Medicine! It's an amazing journey and I can guarantee you that it will be some of the most memorable, exciting and vibrant years of your life. I've met so many incredible people in my time here and have had some unforgettable experiences. My advice to you is to be brave, find your passions, and enjoy everything this wonderful university has to offer. These next six years will fly by before you know it!

My job is to advocate for you - with the help of an amazing team of year representatives, we relay your feedback to Faculty members and do our best to support you through your medical degree. If you ever have any concerns or questions regarding your teaching, assessments or just your degree in general, please feel free to contact me any time! Best of luck for your first couple weeks and I hope to meet you all soon :)

Lots of love,
Angela <3

FACEBOOK GROUPS TO JOIN



UNSW International Medicine Students Collective

This is the official collective group for all UNSW International Medical Students where you will receive the latest updates on exciting events, internship information, and can connect with your fellow international meddies. You definitely don't wanna miss out on anything so make sure to join!

Facebook Group: <https://bit.ly/international-group>

UNSW Medicine Class of 2027

This is the official group for ALL incoming first years in your cohort (both domestic and international)! Your first-year reps will be updating you here with communications they receive from the medical faculty, end-of-course tutorial information, and fun first-year events to attend :D

Facebook Group: <https://bit.ly/class-of-2027>



UNSW Medicine Noticeboard

This is the official collective group for ALL UNSW Medical Students (both domestic and international) where you will receive general medsoc notices and announcements, textbook sale offers, information about jobs to apply for, and much more!

Facebook Group: <https://bit.ly/med-noticeboard>

COUNTRY GROUPS TO JOIN

Singaporean Medical Society



Hi everyone, welcome to UNSW Medicine! We have experienced the demands of being in a new environment far from home and having to deal with a new system. For this very reason, we try our best to support our juniors through their early years. Over the last few years, we have rolled out various events including mentorship programme for freshies, frequent academic tutorials for Y1s - Y6s, and social events to help bring everyone together! Apart from these events, we have introduced more outreach activities such as volunteering programs at nursing homes and blood donation drives. We look forward to welcoming you to our society, drop us a message on our Facebook page and we'll get you sorted!

SMS rep: Maverick Wong (III) & Jesmin Wong (IV)

Facebook group: <https://www.facebook.com/groups/sms.nsw/>



Hong Kong and Macau Medical Society



Hey everyone and welcome to UNSW! We are the Hong Kong and Macau Medical Society (HKMOMS), a society that brings together UNSW Meddies from Hong Kong and Macau to support and encourage each other throughout the six years of medical school. We understand you might be daunted by your journey ahead, but as seniors who have experienced the same thing, we're here to help! Over the past few years, we have hosted many tutorial sessions and study groups to help our fellow meddies academically. We also hope to form a fun and close knitted group to hang out, road trip and travel together. Please feel free to reach out to us, and we hope to meet you all very soon!!! :)

HKMOMS reps: Andrew Wong (III), Theodore Yu (III) & Janine Tsoi (IV)

Facebook Group: <https://www.facebook.com/groups/1953445448295235>

Malaysian Medics International Australia



Welcome to the land of kangaroos and koalas, and most importantly, the land where you will build and shape your medical career! Settling and finding your place in a new place can be tricky and uncertain especially when we are far away from what we know best – our close friends and homes. However, this is also our opportunity to expand and grow ourselves in ways as new or foreign as this land.

We connect Malaysian medical students from all states, to learn and expand our circle of friends; a platform to educate us with contemporary issues from back home as well as internationally; a platform to cultivate our values, enabling us to remember why we embarked on this journey. Hope to meet everyone real soon!

MMI Australia rep: Jesselyn Sin (II)

Facebook group: <https://m.facebook.com/MMIAustralia>



MUST-DOS



Student Visa

- Necessary medical examinations required for the visa application process
- There are specific medical centres to get your checks done



Overseas Students Health Cover (OSHC)

See the website linked for more information:

<https://student.unsw.edu.au/overseas-student-health-cover>



New South Wales Health Check Requirements

<https://medprogram.med.unsw.edu.au/nsw-health-requirements#tab-303400538>

1. UNSW Student ID card - pick up from The Nucleus: Student Hub in main library
2. National Police Check (+1 photocopy)
3. Police check from home country (+1 photocopy) or Statutory Declaration (+1 photocopy)
4. Code of Conduct Agreement
5. Tuberculosis Assessment Tool (form 2)
6. Student Undertaking/Declaration (form 3)

MUST-DOS

Enrolment

To enroll, you'll need your student number (zID) and zPass to log onto www.my.unsw.edu.au. You need to enroll into the following two courses for Semester 1:

Medicine Teaching Period 1: MFAC1501 Foundations

Medicine Teaching Period 2: MFAC1521 Beginnings, Growth & Development A

The Phase I program is made up of eight courses, each lasts 8 weeks. Your timetable for the course will be uploaded prior to its commencement on eMed. Unlike other courses, timetable for Medicine can differ every week and last minute changes aren't unheard of. In terms of your Foundation's timetable, once MedFac finalises clinical allocations, scenario groups and more, your timetable will come out in mid-Feb.

An eMed tutorial is available at <http://web.med.unsw.edu.au/Emed/Start.htm>. This will become your most frequently visited sites once university starts. You will find your class allocations, course-mates, tutors, lecture notes (including past-year notes & recordings) here, as well as assignment and assessment results.

Payment of School Fees

Payment of tuition fees can be done through myUNSW. Once logged in, click on the **"My Student Profile"** tab, there will be a **"Fee Statement & Payment Options"** under **"Financials"**, on the left side of the screen. Simply follow the instructions on-screen and you will see the following payment options: BPAY, Australia Post, or Internet Payment via ANZ eGate. Alternatively, you can pay your tuition fees through a wireless transfer via Western Union. Follow the instructions on <https://student.unsw.edu.au/fees/pay> for step-by-step instructions on how to pay your tuition fees and let us know if you have any questions!

Fee statements will appear after your enrolment in the two courses above. It is important to adhere to the deadlines for the payment of tuition fees, for it may affect your ability to take the barrier examinations and your progress in Medicine.

ULTIMATE PACKING LIST

General Clothing



Get your **summer and winter clothes** ready! When you arrive at Sydney in February, the weather is going to be blazing hot. Summer is much drier than South East Asia regions, and a hot summer's day can well be in the high 30°Cs! However, the days start to cool down at the end of May and temperatures will reach around 4-5°C at the lowest. A light wind-breaker or water resistant jacket will go a long way in dealing with Sydney's sometimes windy and rainy seasons.

Hospital Clothing



Prepare a few sets of formal clothes, pencil skirts, dress pants and *enclosed* shoes, as professional attire will be expected in any clinical settings (no jeans or sports shoes). During Phase 1, you only visit the hospital once a fortnight, but in Phase 2, you'll be going to hospital regularly.

You might want to consider buying a lab coat (or two, one to be destroyed in pub crawl) since half of the Practicals in Phase 1 will require a lab coat. As a general rule of thumb, it's better to get all the clothing apparels before arriving at Sydney because shopping is expensive.

Housewares

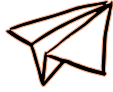


For those of you who plan to live in colleges, kitchen wares and utensils are provided. However, for those of you who won't be staying in a college, housewares are available for purchase in the local stores such as K-mart, Coles, Target and Big W. If you bring any electronic devices from home, don't forget about **adapters/power converters**, as Australia uses **240V** instead of 120V. This is how the power sockets/plugs look like in Australia:



OTHER IMPORTANT INFORMATION

Documentation



Here is a list of essential documents that you'll need when moving to Sydney:

- **Identification documents: Passport, Driver's license, birth certificate (opt)**
- **Printed copies of your eCoE**
- **NSW Health Bulk Compliance Checking: Medical records, Vaccination card, police certificate**

You will need these in many situations, such as setting up your bank accounts and phone plan. And if possible, get a Notary Public to certify these photocopied documents as official ones, so you will not need to carry the actual documents around all the time and risk losing them.

Textbooks and Medial Equipment



For phase I, most of the lectures have lecture notes provided and textbooks are generally available in libraries both online and in hard copies. As there are several versions of textbooks referenced by the lecturers, you're better off waiting until the course has started to figure out which books you will learn the best from.

In terms of medical equipment, it's better to buy a good **stethoscope** from the start. It's a good investment since you'd want it to last for your whole degree. You can contact the International reps about any stethoscope related questions after you arrive in Sydney, so don't worry about this now! Additional medical equipment such as a **pen torch, reflex hammers and tuning forks** are worth purchasing. However, in your early years, these can be borrowed from the Clinical Simulation room in Wallace Wurth.

Food



Australia is really strict with quarantine, but as far as I know, you're allowed to bring yummy snacks/biscuits from home as long as you declare it and it is sealed!

ACCOMODATION (ON CAMPUS)

Non-Catered

- Barker Street Apartments
- Colombo House
- High Street Apartments
- Mulwarree Apartments
- New College Village
- University Terraces
- UNSW Village

Catered

- Basser College
- Baxter College
- Fig Tree Hall
- Goldstein College
- International Hall
- New College
- Shalom College
- UNSW Hall
- Creston College (All female college)
- Warrane College (All male college)



For the uninitiated, some colleges are pretty much the Australian equivalent of American fraternities. However, some are different as they're dry (alcohol-free) whilst some are known for their social and party atmosphere. Living on campus is very convenient because you will have scheduled class Monday to Friday with 9am, sometimes earlier starts most days. In addition, it is a good way to start making friends with other students and get involved in the various events that are held in UNSW. On-campus accommodations are usually high in demand and the application process differs between all the housing options, so apply as soon as possible if you're interested in living there! If you don't know when you can make it to Sydney- don't worry, you can also just apply for a single semester accommodation contract instead of a full-year contract! For more information: <http://www.accommodation.unsw.edu.au/>

ACCOMMODATION (OFF CAMPUS)

If you would prefer to live off-campus instead, there are plenty of other options you should check out! These options may be cheaper and might offer a more independent lifestyle. There are many residential areas available around the university if living on-campus is not your preference. It is better to live in places closer to the university, such as Anzac Parade and Randwick. There are other available places too, such as Coogee, Maroubra, and the CBD. However, living there requires you to take the bus to the university. It is important to note that international students do not get concession Opal card prices, so living further away will cost you more in transport. For more information:
<https://accommodation.unsw.edu.au/off-campus-accommodation>



Unilodge

UniLodge, is student accommodation designed to provide a secure and comfortable living environment for UNSW students. There is a welcoming and friendly atmosphere with excellent student support. This will be the place for you if you like peace and quiet but also want to meet people from a range of cultural backgrounds. It is just a 10 minute walk from campus and if you don't feel like walking, you can also catch public transport.

For more information visit:

<https://accommodation.unsw.edu.au/apartments/unilodge>

GETTING AROUND SYDNEY

Public transport

The NSW Transport Info website www.131500.com.au is an awesome tool for planning trips around Sydney.

If you have a smartphone, there's an Android/iPhone app called TripView Lite Sydney which also lists transport times that you can access offline. The full version (\$2.99 AUD) comes without ads and allows you to save your trips, so that you don't have to reenter to-and-fro places each time you use the app.

The Opal card is an easy, convenient way of paying for your travel on public transport (ie. buses, trains, ferries). Using Opal card has many benefits like 30% off-peak discounts on full price Opal fares, unlimited 1-day travel for just \$8.15 on weekends and public holidays, etc.

The Opal card itself is free and you can load as little as \$10 in it. To obtain an Opal card, you can either get it from retailers (most convenience stores/WH Smith on campus) or online (just register, add value to your Opal card and it will be mailed to you)!

More info on the Opal card: <https://www.opal.com.au/Do> keep in mind that if you are caught with a concession ticket for MyBuses/MyFerries/MyTrains without the concession sticker on your student card (sticker only given to domestic students), you will be fined (\$100 in buses, \$200 in trains).



Car

The costs of having a car in Sydney can be pretty expensive, as you have to consider insurance, green slips, registration and petrol. Parking can also be an issue, parking on campus (free/short term paid) or in the near vicinity are limited. However, a car does make travelling convenient, especially if you are planning to travel around Sydney frequently, or if you are staying on campus and are allocated to hospitals such as Liverpool/Bankstown.

If you are interested in purchasing an after-hours parking permit, they are available at FM Assist. More information can be found on

<http://www.facilities.unsw.edu.au/node/25/#studentandvisitorparkingpermits>.

GENERAL LIFE TIPS

BANK ACCOUNTS, PHONE NUMBERS, ID

Identification

If you plan on going to 18+ events, you will need a valid ID (official identification with photograph and date of birth). Passports and driver's licences are often accepted, but if you feel that it's not safe to carry your passport/driver's licence with you to clubs/bars, you can apply for a licence or Proof of Age Card through the RTA website.

Bank Account

You're going to live here for the next 6 years, so you're likely to want to set up an Australian bank account. You'll need your passport, an address, a phone number and bank documents from home to open an account. There are Commonwealth, ANZ, and Westpac ATMs scattered around campus. The choice of bank account that you open is completely up to your needs and preferences. PRO TIP: If you're opening up a bank account, make sure to register for a Tax File Number (TFN) online. This will allow you to claim back any taxes that your bank deducts from your savings accounts and is also required to find work in Australia. <https://www.ato.gov.au/individuals/tax-file-number/apply-for-a-tfn/>

Internet

On-campus as well as some off-campus accommodation offer Wi-fi internet. For those off-campus accommodations that do not supply wifi, there are many internet providers that you can choose. When choosing a plan you will have to weigh the cost with reliability along with any other particular personal wishes. The following link provides a comparison of broadband plans to help you choose one most suitable for you. In the suburbs box type "2033" for UNSW. <https://www.iselect.com.au/internet/>

Some possible internet providers are listed below with personal experiences from fellow students.

Dodo.com.au: cheap – unreliable

TPG.com.au: cheap – can be unreliable but generally pretty good

Optus.com.au: expensive – better

Telstra.com.au: expensive – better

Amaysim: cheaper options if you don't need lots of data

Phone Numbers

There is a range of different providers in Australia with varying pay plans. To apply for a phone plan, some companies might need your passport, eCOE, bank account details, and proof that you're living at Sydney (electrical bills, etc.) and go to the nearest telecommunication shops (Vodafone/Optus).

GENERAL LIFE TIPS

EMERGENCY CONTACT DETAILS

Here are some numbers that may be useful to keep in your phone at all times! :)

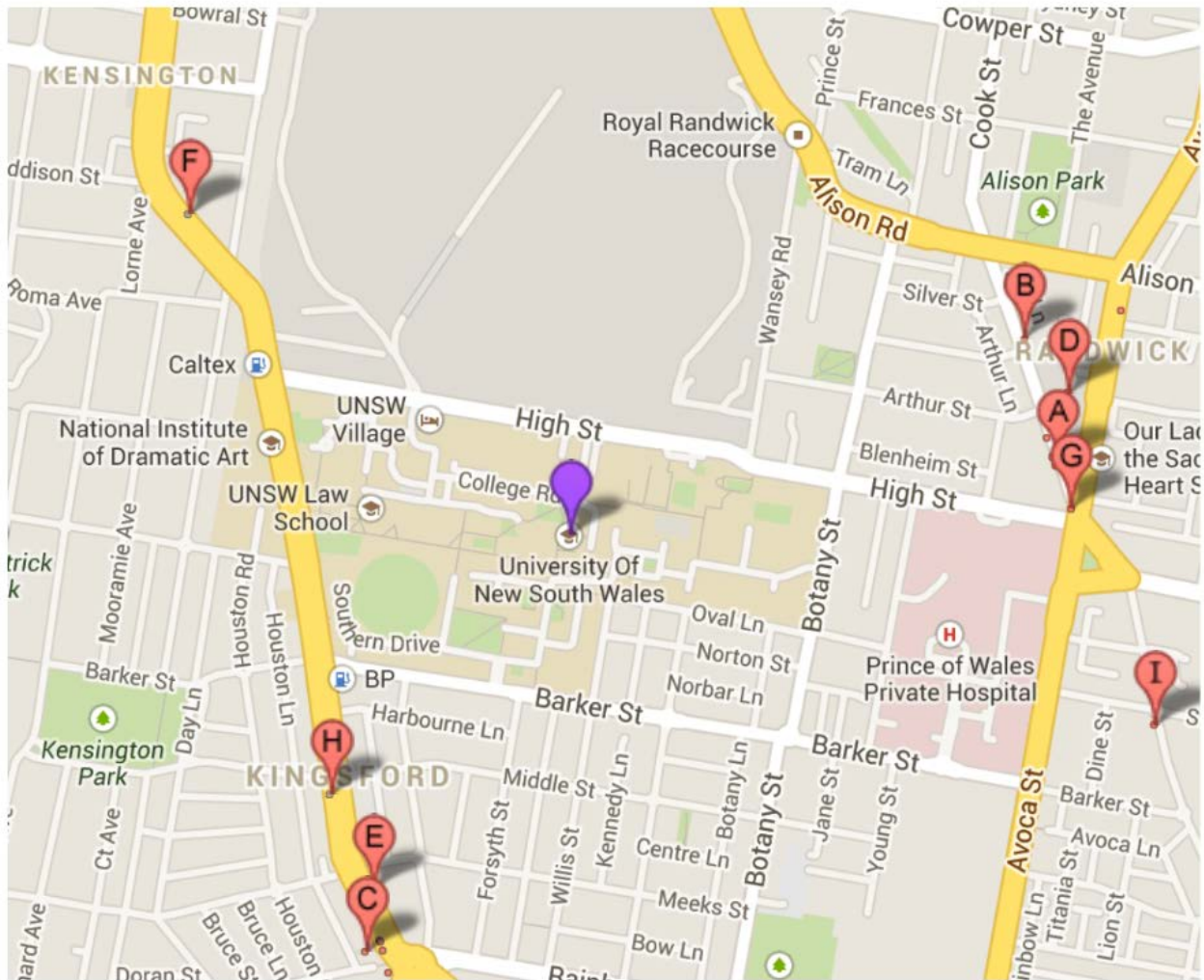
1. Police, Fire & Ambulance: 000
2. UNSW Security Services: 9385 6666 (in an emergency) 9385 6000 (everything else)

UNSW Security Services is a 24 hour security presence on campus and maintains security monitoring services for the University. There are many initiatives carried out by them to enhance our safety, such as safety escorts, night shuttle bus and help points on campus. More information can be found at <http://www.facilities.unsw.edu.au/security-safety/about-unsw-security-services>.



GENERAL LIFE TIPS

GROCERIES AND SUPERMARKET



A – Coles Supermarket or **D – Woolworth Supermarket** (inside the Royal Randwick Shopping Centre)

*These are the two major supermarkets in Australia, where you get quality food at the cheapest price.

B – Randwick Oriental Supermarket

C – IGA Everyday or **Gate 2** on campus

*Slightly pricier supermarket located in Kingsford. Grab your grocery on your way back home if you are eating at one of the restaurants there.

E – Randwick Oriental Supermarket (same name, but this one is located in Kingsford)

H – Tokyo Supermarket (Asian supermarket)

I – The Spot (Good place to hang out with friends. It has many good restaurants, and desert places. The Ritz cinema at the Spot has discount prices for students and Arc members.)

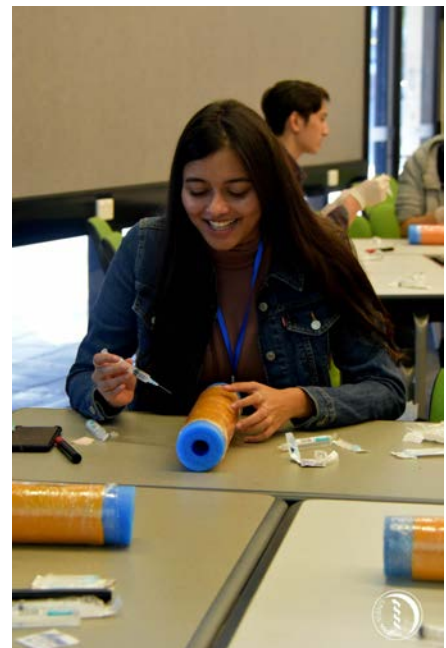
Eastgardens Westfield is the closest shopping centre near UNSW and it's a short 15-minute bus ride away (Bus Route 392), it has a food court, Coles and Kmart/Target/Big W/Myer etc.

INTERNSHIP



For all you keen-bean freshies out there, we have one word: Relax. Internships positions are 6 years away for you, and it should not be your first thought at the moment. There's jobs available for all of us graduates, here in Australia or back at home. Focus on settling down, finding activities and friends, and enjoying your academics.

However, follow and read up on positions by the Australian Medical Society. It has an international chapter. Do your own research on internship positions upon graduation. Get involved in the AMSA International Students Network (ISN) on facebook.



Later on this year, we will be having an information night where we will get the president of AMSA's international network speak to us on internship positions, and we will get international alumni working in Australia to give us a presentation on applying for jobs here. Look out for the talk!

- 1.AMSA's International Chapter-<https://www.amsa.org.au/node/930>
- 2.AMSA International Network Group-<https://www.facebook.com/groups/ISN.AMSA/>

GET INVOLVED

O-week: 7-11 Feb 2022

We know that O-Week may be very different this year if you are not able to make it onto campus due to COVID-19 travel restrictions. Check out the two links below to stay up-to-date with information about O-Week and look out for any international student FAQs and virtual events!

<https://student.unsw.edu.au/orientation>

<https://www.arc.unsw.edu.au/o-week>

Medicine and Health Faculty Orientation Day (O DAY): 8 Feb 2022

There will be a talk from the Medicine and Health Faculty including the Dean of Medicine in the morning at the UNSW Roundhouse, followed by presentations at the CLB7 lecture hall from MedSoc, opportunities to meet the whole rest of the First Year cohort and sign up for MedSoc, medical indemnity insurance and other important organisations.

Medicine Program Orientation Day (P DAY): 15 Feb 2022

There will also be a second orientation day where you can tune in to a talk from the Medicine Faculty including the Phase One Convenor, followed by some social events with the rest of the First Year cohort.



GET INVOLVED

Meet Your Mentors/MedSoc Mentoring (International mentorship program)

I'm sure some of you have already indicated your interest for the mentorship program, but if you haven't, fear not, just indicate your interest in the link below! This mentorship program is aimed at helping first years integrate into the new environment and you can ask your mentors anything under the sun- from how much sunscreen to buy to any study tips! Your group of mentors will also organize fun virtual/in-person meet-ups for you.

<https://forms.gle/qK2wE1bKJTjQTctz6>



International First Year Welcome

This is a special event where international med students will be able to meet their fellow international peers! It'll be our first on-shore event to help introduce first-years to life as an international Medicine student, with free food provided. You definitely don't want to miss out on this so keep an eye out for this event on Facebook!

Cultural Week

Held within Diversity in Medicine Month, Cultural Week is an event to help spread awareness and embrace the many diverse cultures within our UNSW medicine community. There will be multiple events such as, international film festival, cultural food market, cultural celebration party etc. to allow students to share and learn about the different cultures within our community.

GET INVOLVED

Physician's Phursdays

Physicians Phursday takes place on the first and fifth Thursday of every term! Come down to the Roundhouse after uni to catch up with the rest of the Med cohort, find out a bit about what's been happening in the UNSW Med community at a quick MedSoc Council Meeting and have some feeds, drinks and chats with all your peers!

Pubcrawl (April 2022)

What more do we love than bar discounts and getting loose through the city. In all seriousness, Pubcrawl is so much fun whether you are or aren't drinking - just have a good night out with your mates. Turnout is genuinely huge especially amongst first years and you all get to wear your lab-coats which everyone gets to sign for the memories!



Medcamp (25-27 February 2022)

MedCamp is often cited as an amazing experience for first-years. It's a great chance to make friends out in the Aussie bush at a lovely campground complete with mountains and nighttime bonfires. And there's free alcohol if you want it <3 Keep your eyes peeled for tickets!



GET INVOLVED

Integration Cruise (July 2022)

Now this one is still a while away but at the start of the third term (HM-B), we host a stunning harbour cruise for 1st and 2nd years to mingle and party! Keep your eyes peeled for this one, you won't want to miss out :) Looking for other fun ways to get involved in uni?

MedShow

If you love dancing/singing/acting, this is definitely for you. MedShow is held in Sem 2, it is an excellent opportunity to showcase your talent while getting to know other meddies who have the same interest in performing arts so look out for that. It will be an experience of a lifetime – you will certainly not regret it!



AMSA Convention (June-July 2022)

Every year, 1000 medical students from all over the country gather to share ideas, listen to speakers, and party like crazy! And this year, the AMSA Convention is going to Newcastle. People literally camp at their computers to get a shot at registration for this convention! Keep yourself in the loop by visiting <https://membership.amsa.org.au/Web/Web/Events/National-convention.aspx>



ULTIMATE CHECKLIST

Get into UNSW Med	DONE :D
Organise Visa	
Fulfill Health Check Requirements National Police Check from both countries Vaccinations Other forms	
Organise Accommodation	
To bring Clothing Hospital Clothes Summer Clothes Winter Clothes Houseware Bedsheets, pillow cases + duvets Cooking equipment/utensils (depending on your accommodation!) Hardware Computers, iPads + chargers Power converters Food (but remember to pack all <u>foods</u> in a separate bag to declare at quarantine) Books Medical Equipment Stationery	
Documents and photocopies Passport, Driver's Licence, Australian Visa Confirmation of enrollment (eCOE) Vaccination Records, serology Birth Certificate, National Police Check Get the photocopied versions certified by a Notary Public	
Accommodation	
Set up Internet Phone	
Bank Account ID	
Register for MedSoc Membership, KMSA/ <u>HKMSS</u> /SMS-NSW/MMS	
Attend International Orientation Afternoon (TBA)	
Feedback to international@medsoc.org.au	

COVID-19 INFORMATION

Australian Government website:

<https://covid19.homeaffairs.gov.au/>

NSW Health website:

<https://www.health.nsw.gov.au/Infectious/factsheets/Pages/recent-vaccinated-arrivals-guidelines.aspx>

UNSW website:

<https://www.student.unsw.edu.au/return-offshore-international-students-pilot-program>

HETI Student Placements and COVID-19 FAQs:

<https://www.heti.nsw.gov.au/Placements-Scholarships-Grants/clinical-placements/faqs-clinical-placements-and-covid-19>

<https://www.student.unsw.edu.au/student-travel-concierge-service>

This is a newly developed site that UNSW is setting up for international students and they are promoting services like airport pickups to the students directly.

WE CAN'T WAIT TO MEET YOU!



LOVE, YOUR MEDSOC